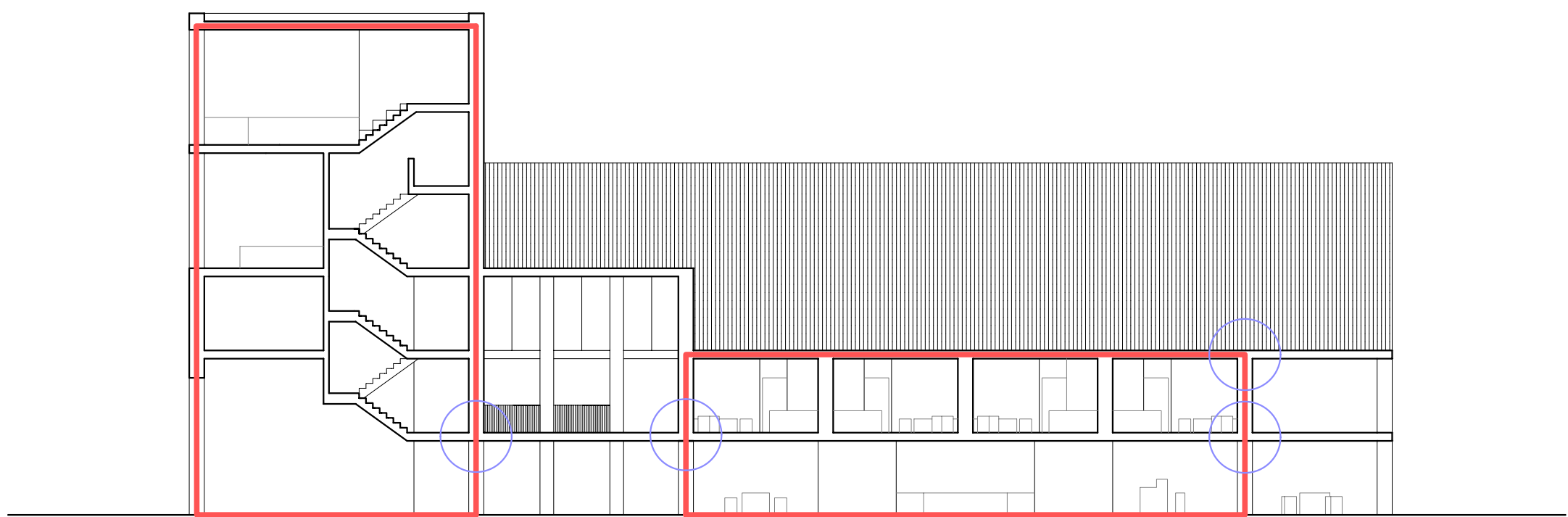
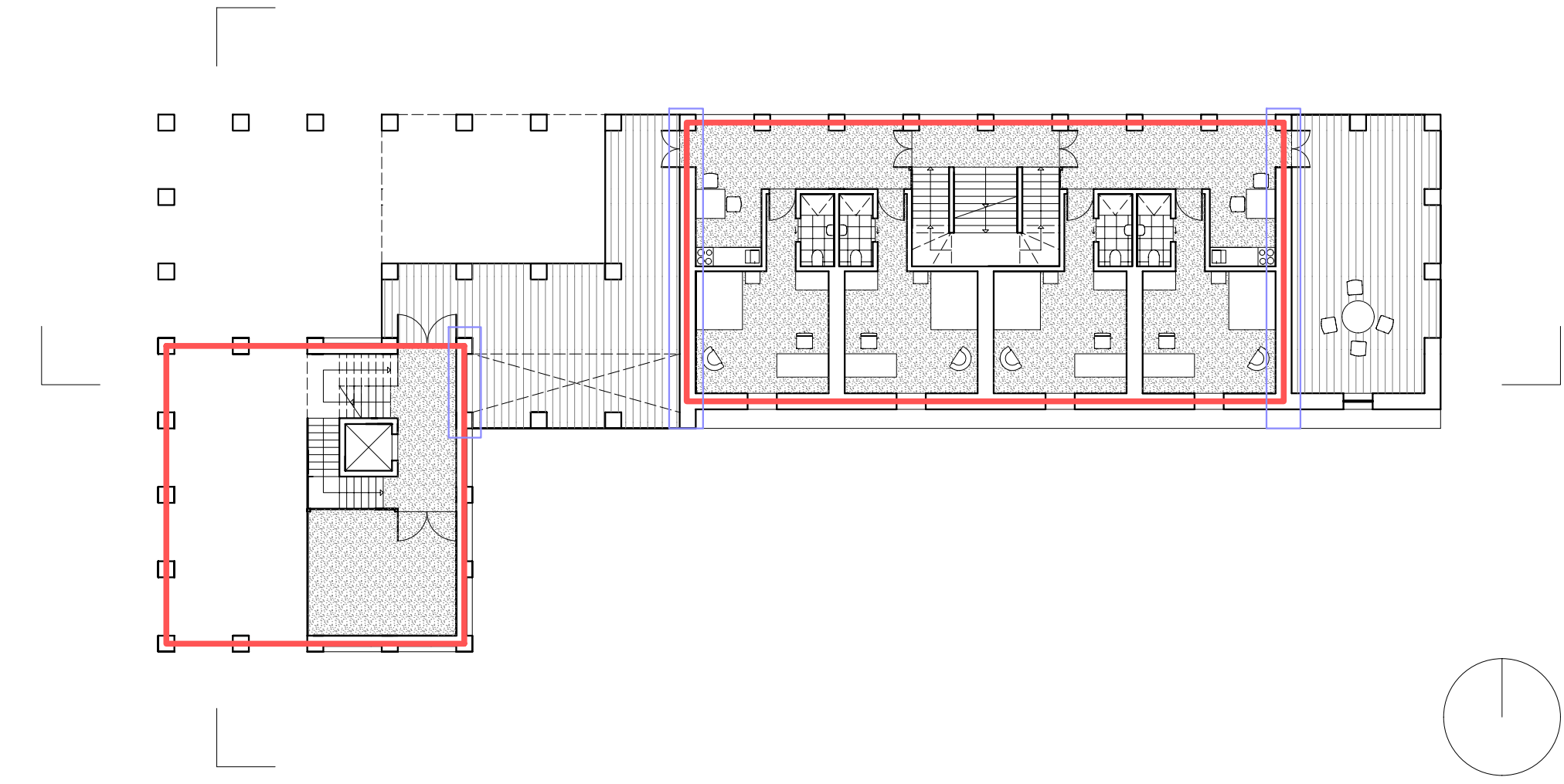


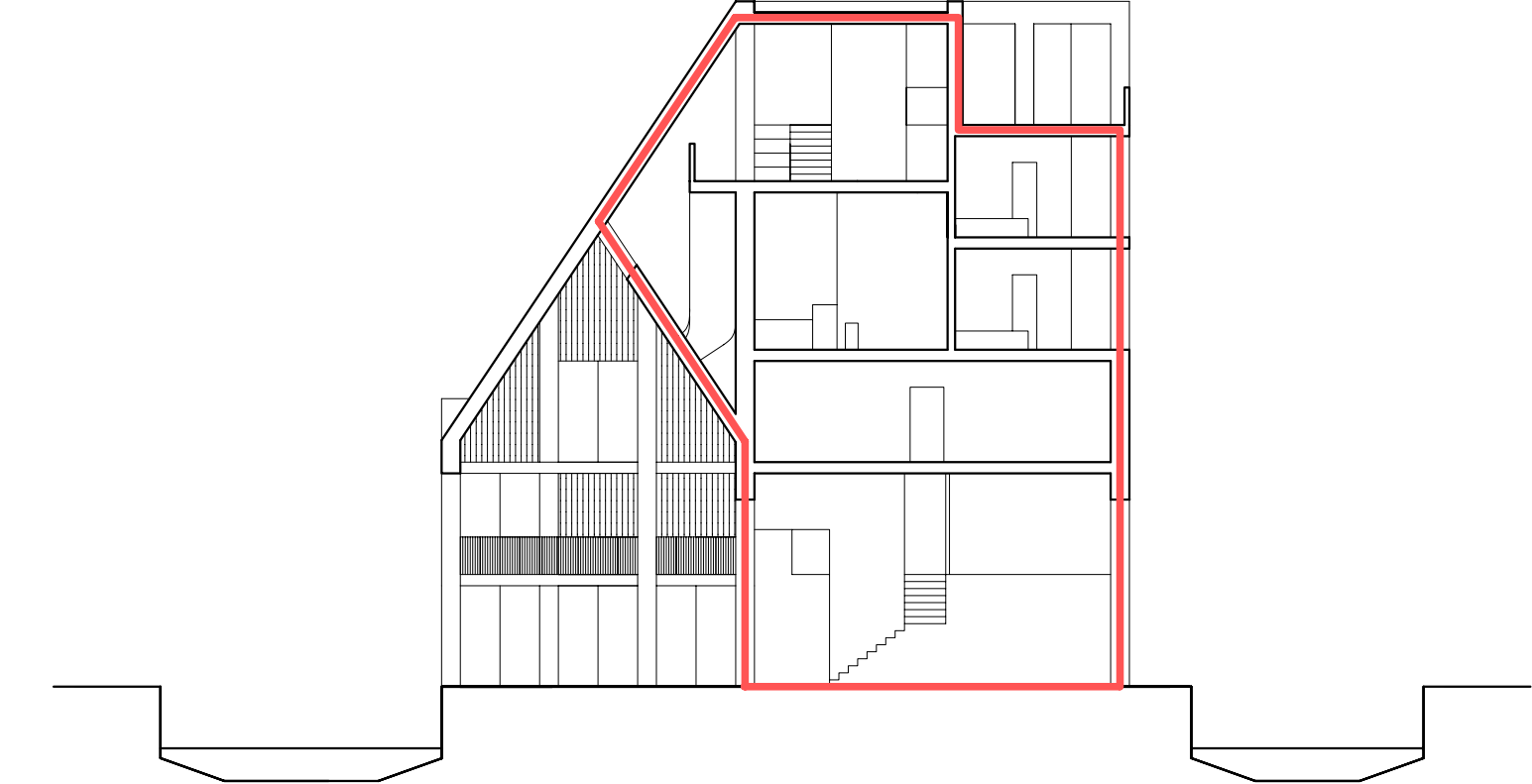
second floor plan 1:200



section 1:200



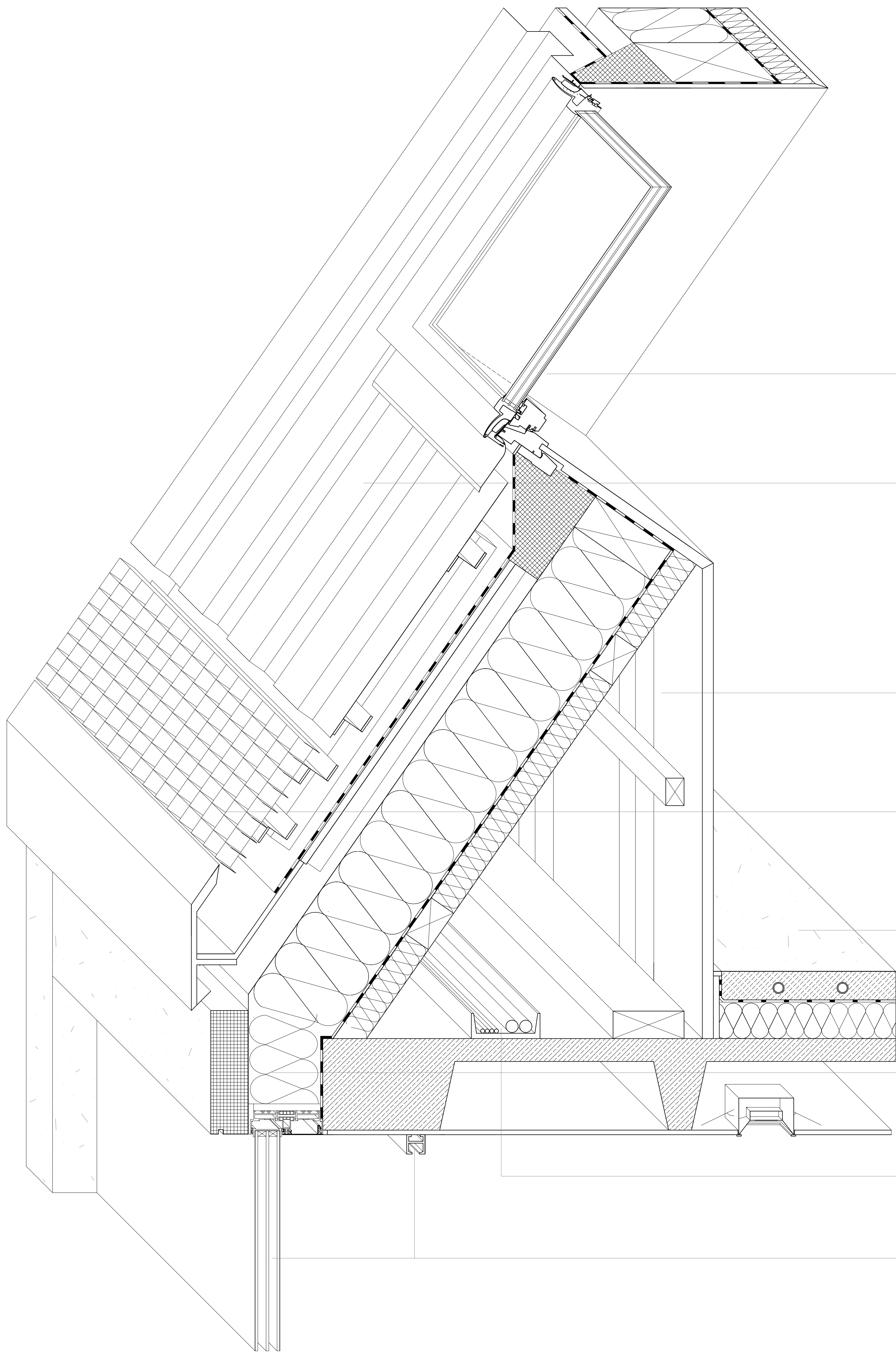
first floor plan 1:200



section 1:200

thermal envelope

- thermal envelope
- thermal break situation (solved with Schöck Isokorb)



Roof Window  
Velux Triple-glazed Roof Window (u-value: 0,82)  
Additional EPS Rigid Insulation

Roof (Cold Roof)  
from exterior to interior:  
40mm Corrugated Aluminium Roofing, painted  
25x80mm Horizontal Aluminium Substructure  
25x80mm Vertical Aluminium Substructure  
Waterproofing Membrane  
15mm Timber Planking  
70x90mm Vertical Timber Lathing  
200mm Glass Mineral Wool Insulation between rafters (u-value: 0,15)  
Vapour Barrier  
60mm Glass Mineral Wool Insulation (u-value: 0,50) between 70x90mm Horizontal Timber Lathing  
12mm Plasterboard, painted, joints skimmed, mechanically fixed to structure

Interior Drywall  
from exterior to interior:  
150x60mm and 60x40mm Horizontal Timber Structure  
60x40mm Vertical Timber Structure  
12mm Plasterboard, painted, joints skimmed, mechanically fixed to structure

Rainwater Gutter  
from bottom to top:  
Aluminium Sheet to cover ventilation level, painted  
200x100mm Rainwater Gutter integrated into eave, painted  
Removable grill as protection from leaves, painted

Floor  
from bottom to top:  
12mm Plasterboard, painted, joints skimmed, mechanically fixed to structure  
200mm Cast-in-situ Reinforced Concrete Ribbed Structure  
80mm EPS Rigid Acoustic Insulation, non-compressible (u-value: 0,40)  
Horizontal Moisture Barrier  
60mm Wearing Screed with Underfloor Heating, polished grey

Exterior Wall  
from exterior to interior:  
80mm Precast Concrete Cladding mechanically fixed to structure, polished grey  
160mm Glass Mineral Wool Insulation (u-value: 0,19)

Service Route  
Horizontal Cable Tray on Floor

Sliding Window  
from exterior to interior:  
Sky-Frame Triple-glazed Frameless Sliding Door (u-value: 0,66)  
Curtain Track, mechanically fixed to ceiling

\* u-values in W / (m2 K)

roof detail 1:5