

Wall Garage Layer

- 85mm reuse washed concrete
- 90mm substructure steel profiles + counter battens
- 30mm
- 220mm HEB Steel Pillar
- dry, protected space

Wall Storage Layer

- 85mm reuse washed concrete
- 40mm rear ventilation
- 90mm + substructure steel profiles + counter battens
- 30mm
- 80mm in between wood fiber board insulation encased with wind foil (0,1mm)
- 220mm HEB Steel Pillar
- frost resistant, dry

Wall Workshop Layer

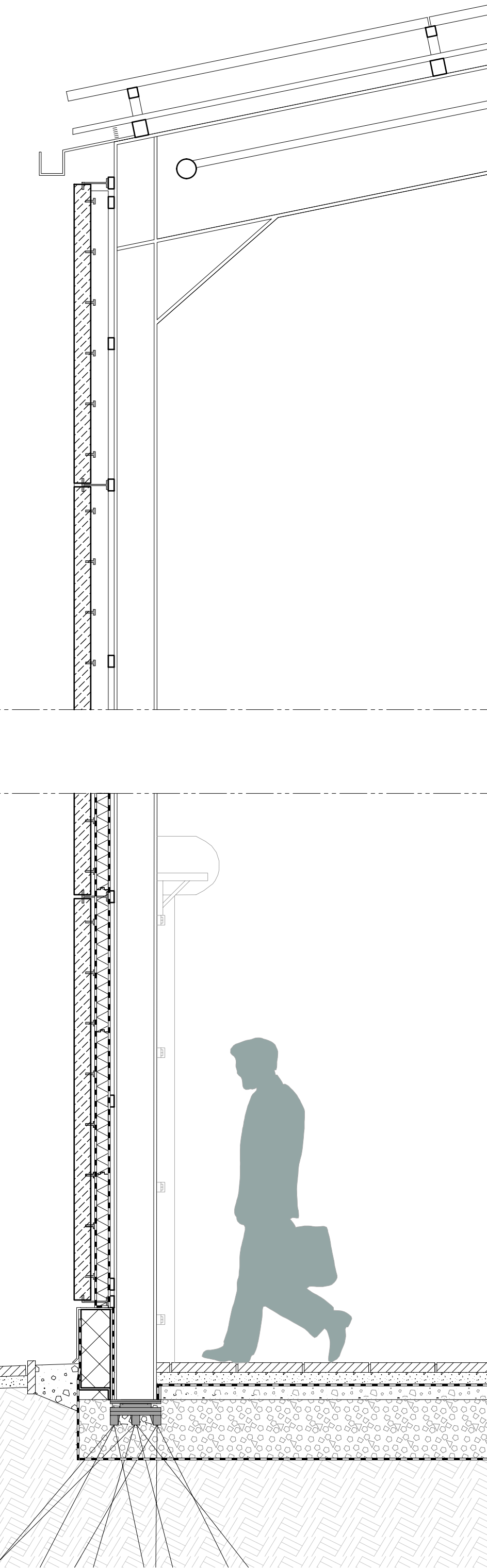
- 85mm reuse washed concrete
- 40mm rear ventilation
- 90mm + substructure steel profiles + counter battens
- 30mm
- 80mm in between wood fiber board insulation encased with wind foil (0,1mm)
- 220mm HEB Steel Pillar
- 200mm in between wood fiber wool insulation
- 0,5mm Vapor Barrier
- 30mm diagonal formwork
- 50mm wood substructure
- 30mm acoustic boards
- dry, working conditions

Wall Office Layer

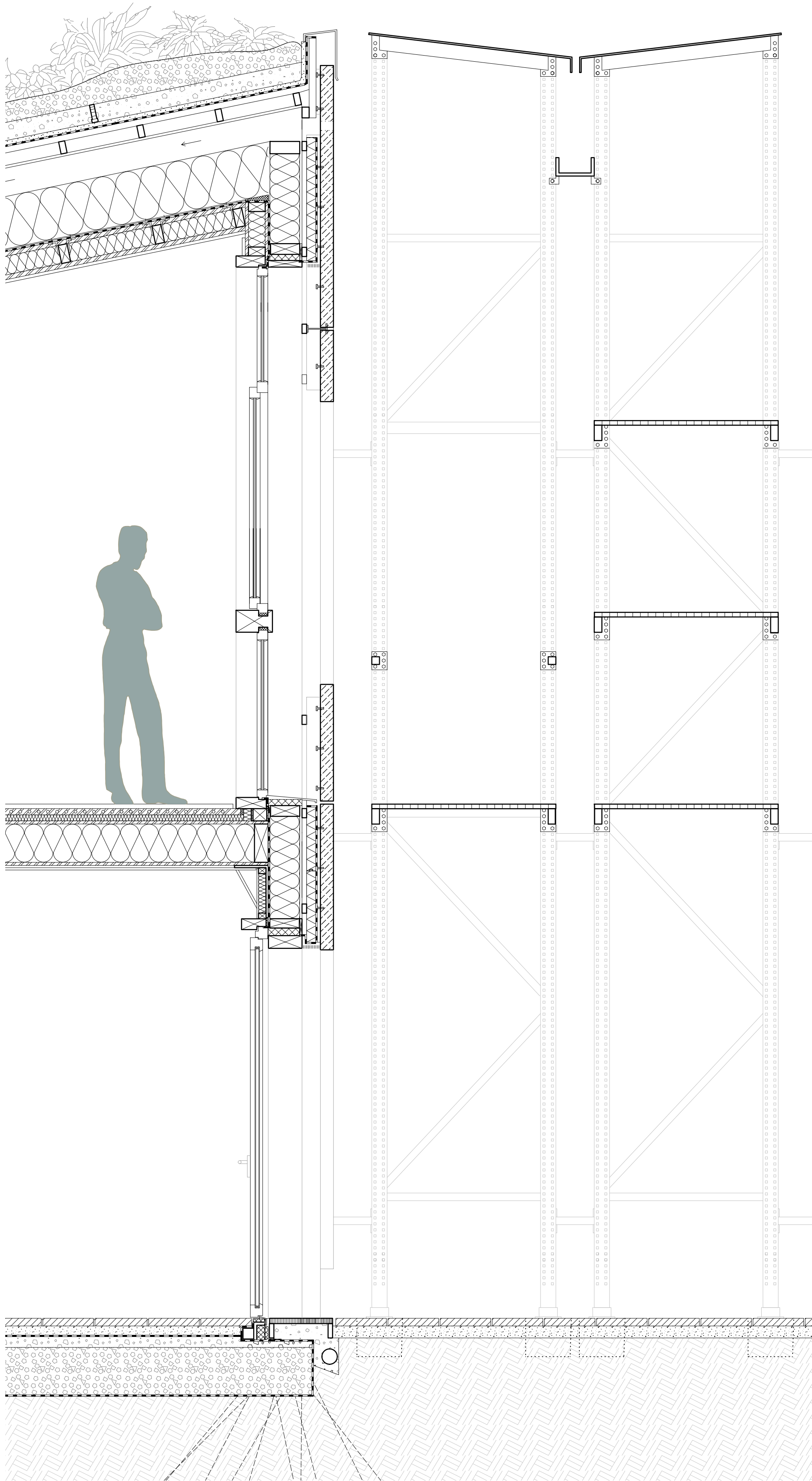
- 85mm reuse washed concrete
- 40mm rear ventilation
- 90mm + substructure steel profiles + counter battens
- 30mm
- 80mm in between wood fiber board insulation encased with wind foil (0,1mm)
- 220mm HEB Steel Pillar
- 200mm in between wood fiber wool insulation
- 0,5mm Vapor Barrier
- 30mm diagonal formwork
- 110mm timber framework in between window layer
- 30mm diagonal formwork
- 15mm wooden slats
- year round comfort

Detai 1:20 Garage | Storage

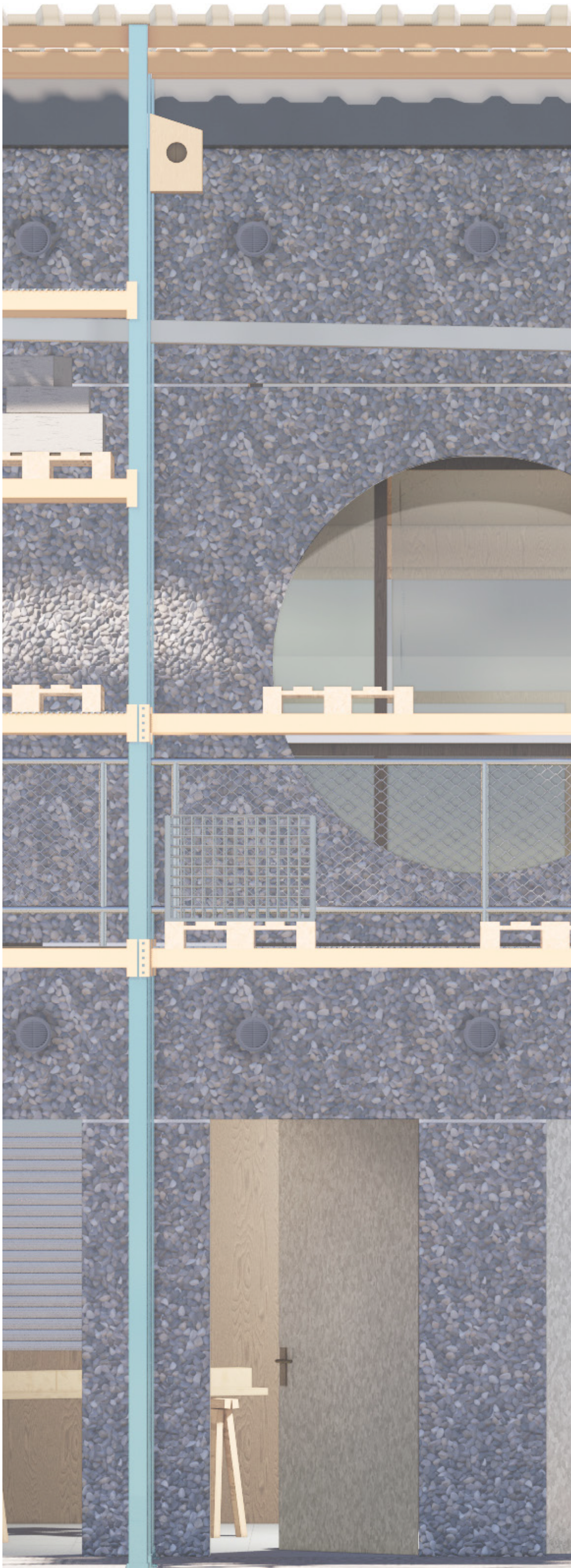
- interlocked
- folded
- clamped
- filled
- screwed
- pinned
- re-use
- circular
- new
- recyclable



Detail 1:20 Office | Workshop | Rack



Facade View 1:20



Floor Storage/Workshop

- Ground Soil
- 0,5mm Geotextile
- 300mm Foam Glas Insulation
- 80mm bloated glass binding layer from waste glass
- 0,8mm Waterproofing membrane
- 55mm gravel+ sand leveling layer
- 50mm concrete stone (49x49cm)

Floor Office

- 30mm acoustic boards
- 30mm diagonal formwork
- 250mm timber beam layer in between cellulose fill insulation
- 30mm diagonal formwork
- 25mm wooden formwork with underfloor heating
- 22mm clay building board
- 25mm reused wooden floorboards

Roof Garage

- 50mm Photovoltaik module
- 140mm substructure profiles
- 0,6mm Trapezoidal sheet metal
- 30mm
- 80mm substructure steel profiles
- 550mm IPE Steel Beam in between Pressure bars (d = 80mm)

Roof Office

- plants & grass
- 120mm-450mm Earth substrate
- 120mm Drainage layer
- 15mm Drain mat
- 3 mm Waterproofing membrane
- 0,6mm Trapezoidal sheet metal
- 30mm substructure steel profiles
- 550mm IPE Steel Beam in between Pressure bars (d = 80mm)
- 150mm in between rear ventiation and wood fiber board
- 330mm
- 0,5mm Vapor Barrier
- 30mm diagonal formwork
- 110mm timber framework
- 30mm diagonal formwork (partly suspended from IPE)
- 15mm wooden slats