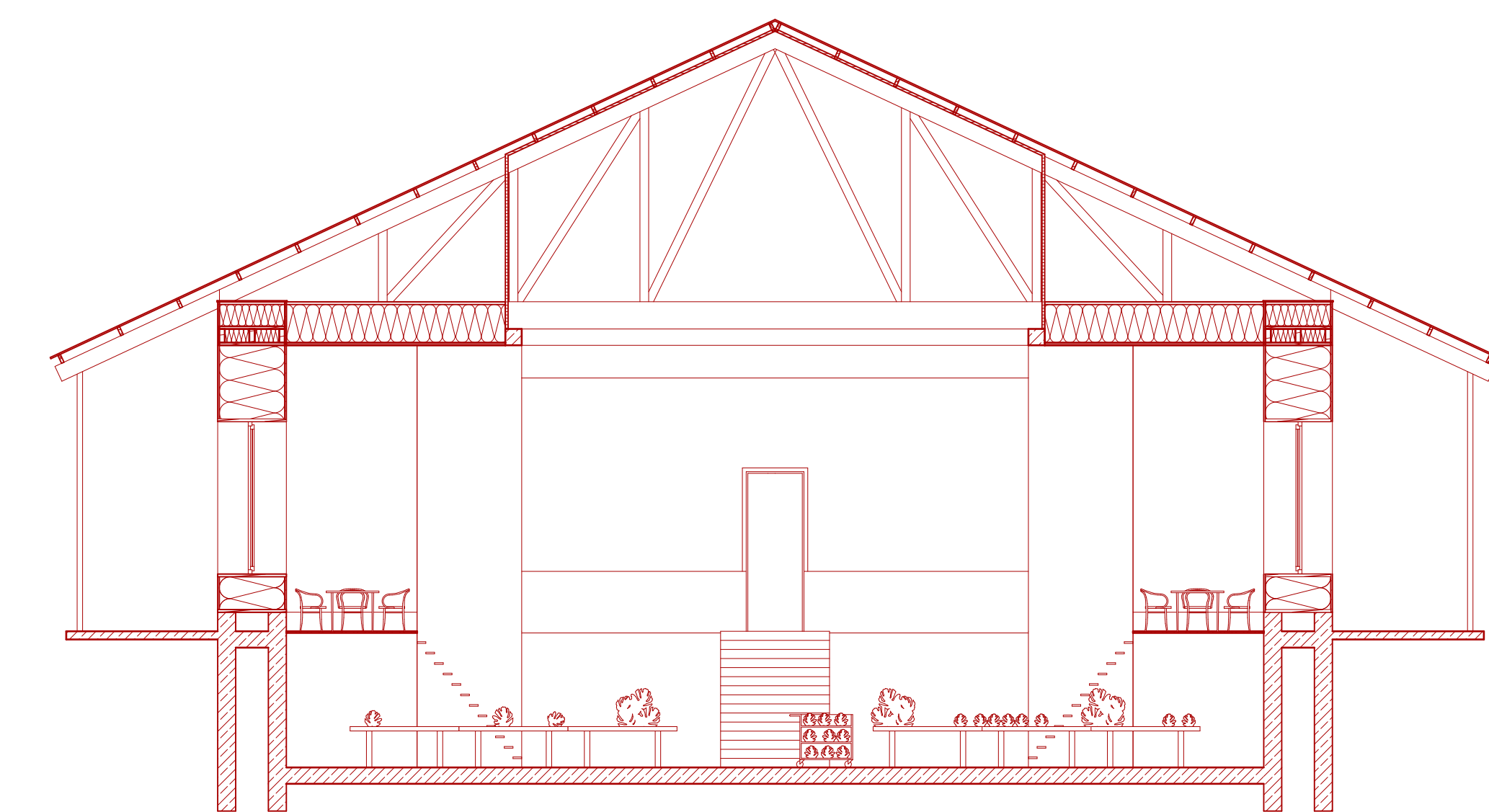
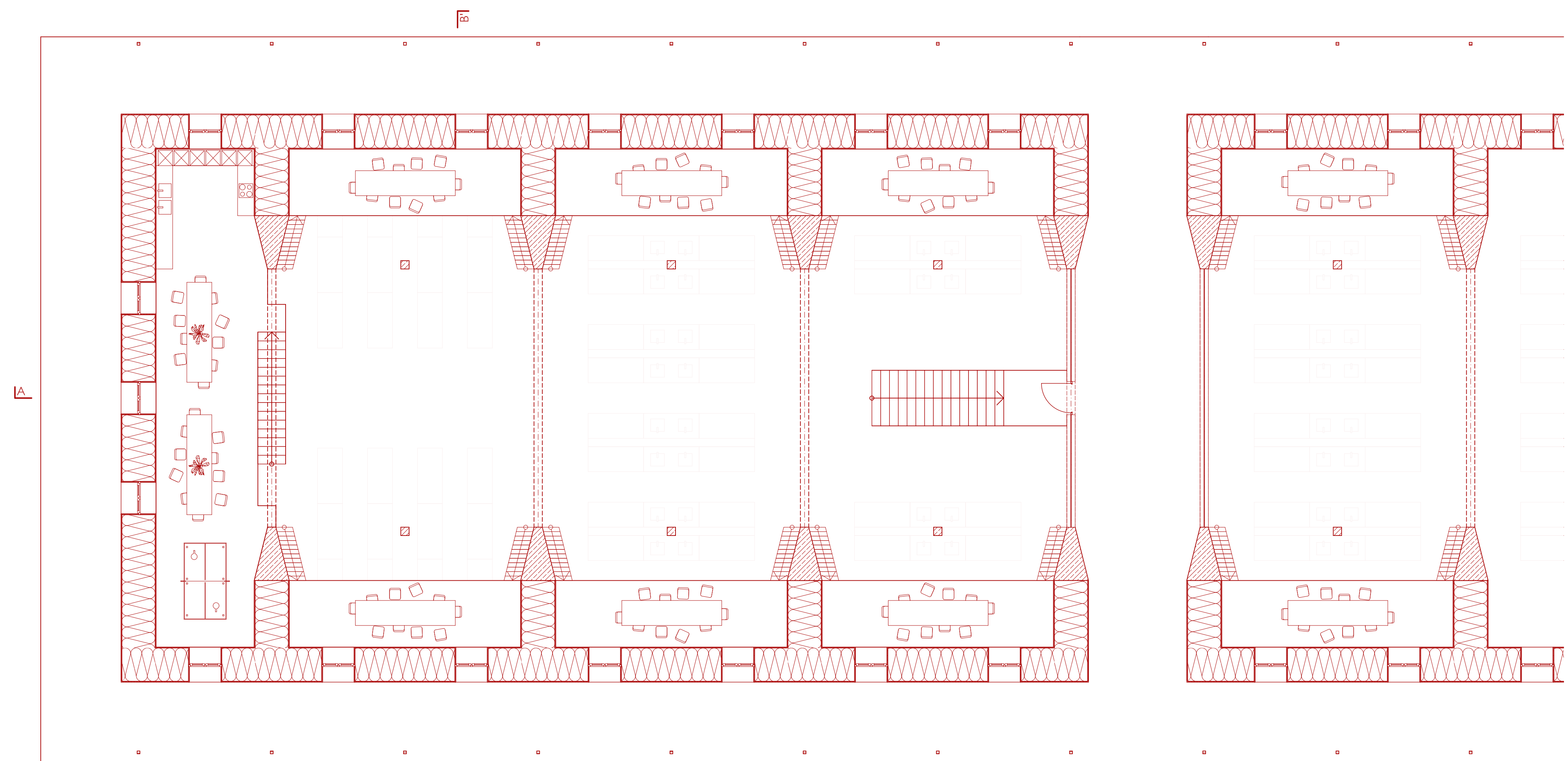


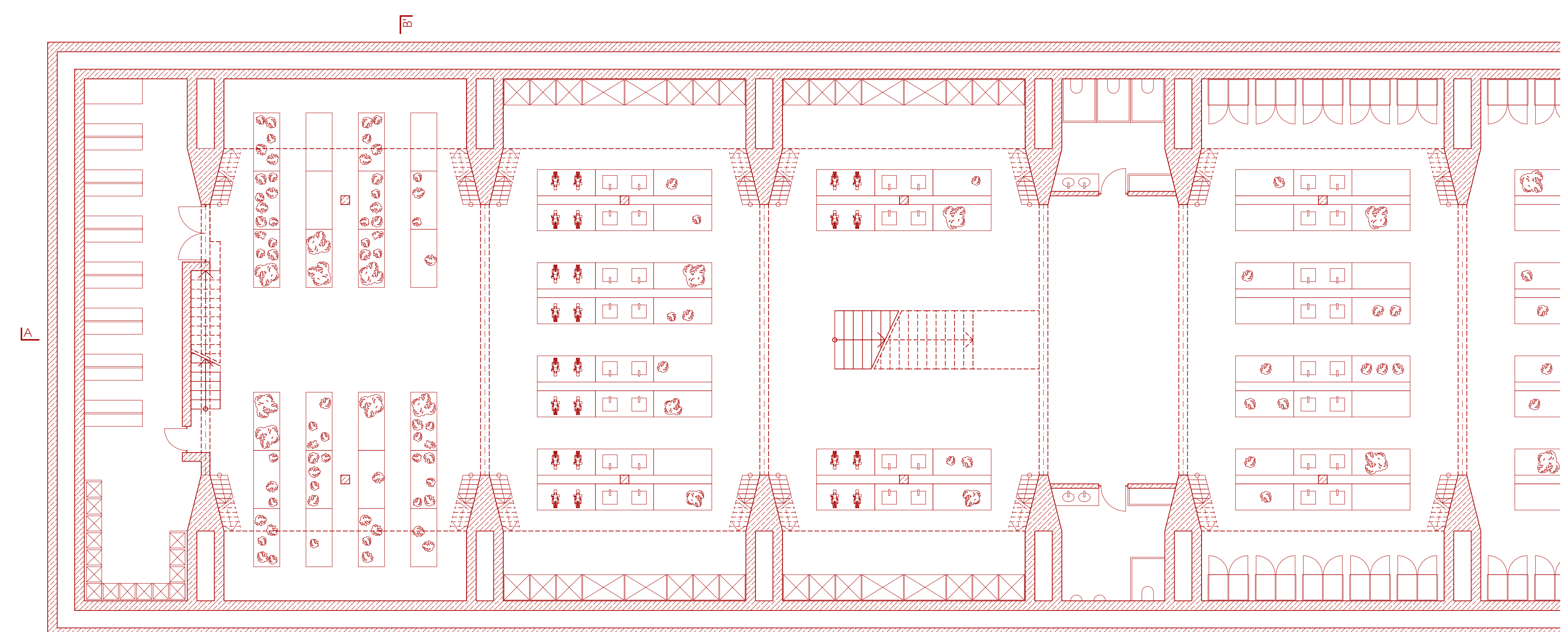
Longitudinal Section A-A'



Cross Section B-B'



Ground Floor Plan: Entrance, Working Stations and Bridge



Floor Plan -I: Cellar, Fresh Analysis Storage, Clean Laboratory, Dirty Laboratory

**Straw Bale Construction with stiffening concrete frame**  
for large spans

**Layer Structure:**  
corrugated aluminum roof  
laths  
timber framework truss  
wooden boards as superior interior surface  
concrete pillar and beam framework  
timber ring beam  
intertwining straw bale walls (120 cm)  
surrounded by corridor  
double row of concrete walls (30 cm)  
with installation shaft in between  
concrete foundation