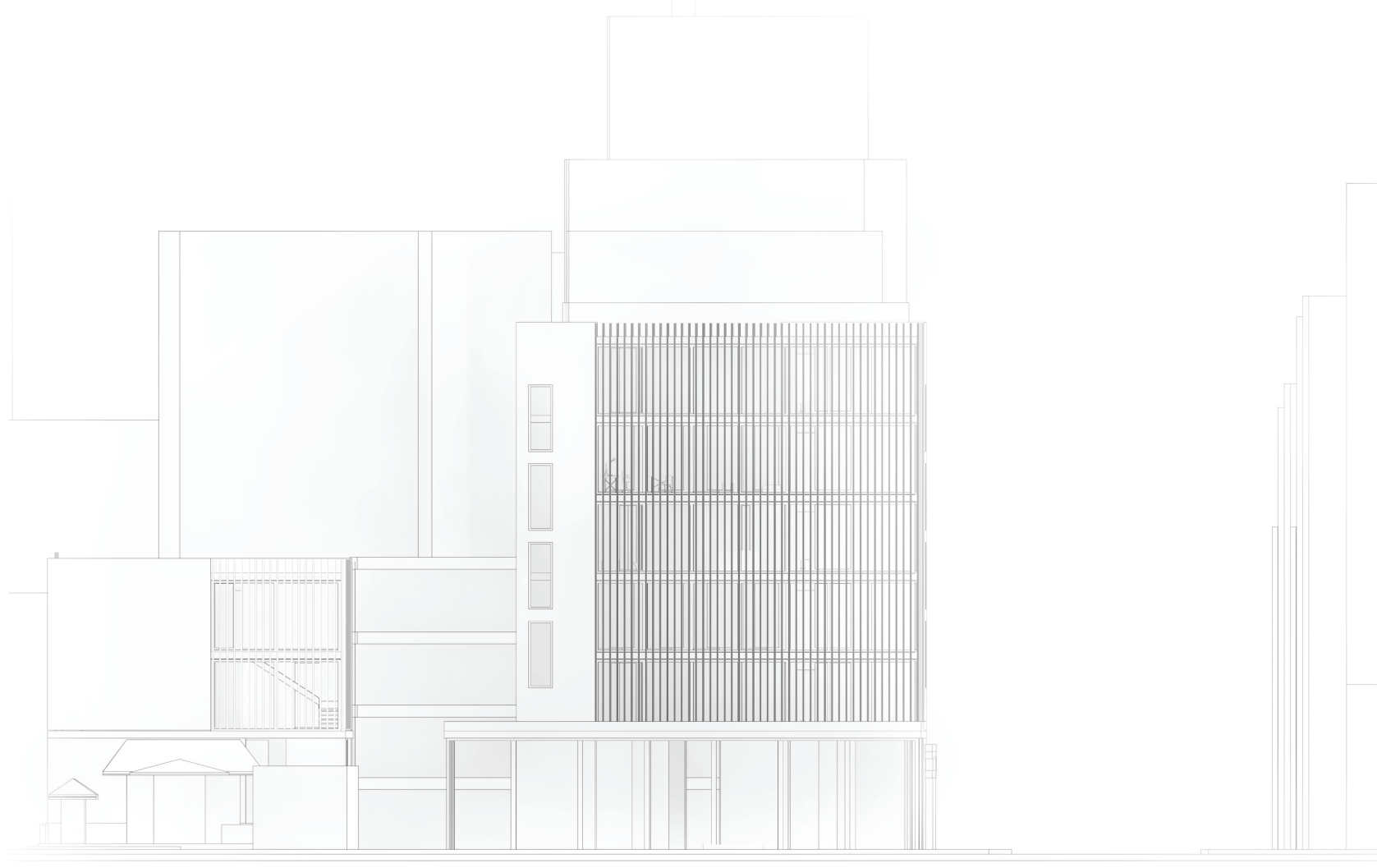
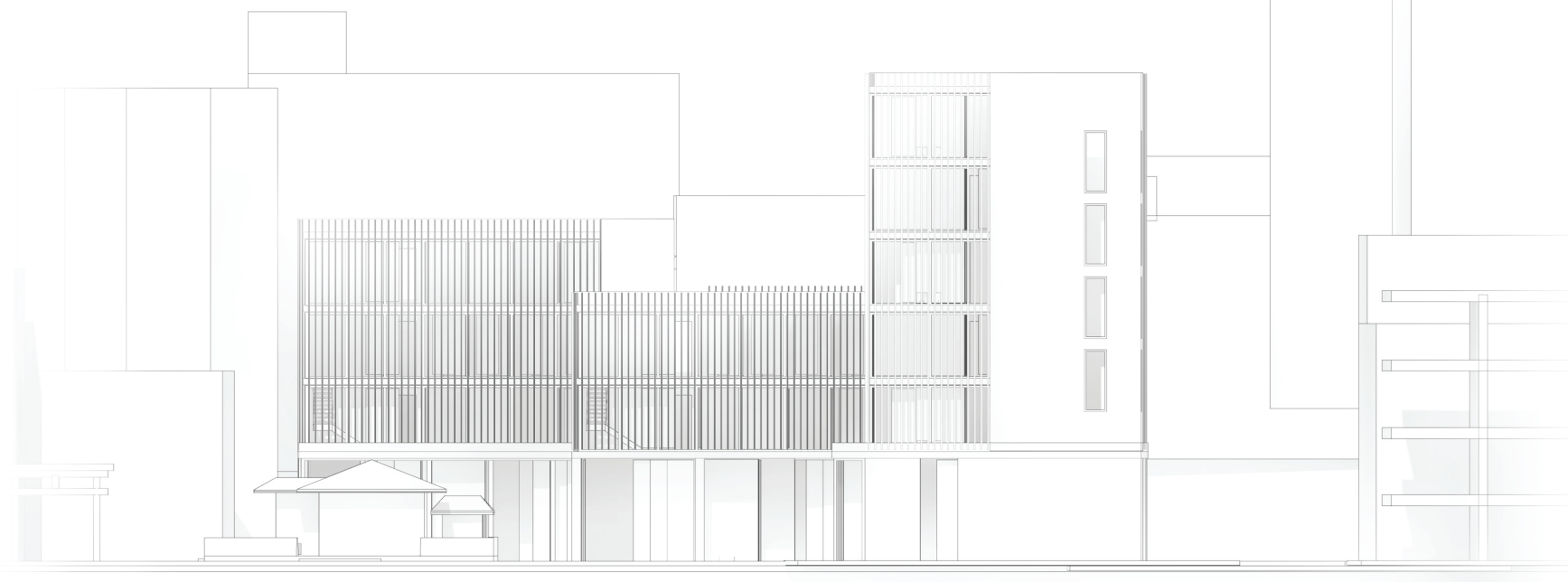


# section

## facade | detail



south side view



east side view

### facade section

M 1:50



#### roof system

- gravel	50 mm
- protection layer	
- foam plastic thermal insulation	50 mm
- two-layer bituminous	
- cross-laminated timber column, 4-layers	220 mm
- wood-fibre boarding, untreated bamboo	30 mm
total	350 mm

#### ceiling system

- parquet floor industry	30 mm
- floating screed	50 mm
- pe interlayer	
- impact sound insulation	35 mm
- reinforced concrete ceiling	120 mm
- glued laminated timber column, 4-layers	220 mm
- formwork bamboo	30 mm
total	485 mm

#### outside stairwaywall system

- loam-render	30 mm
- mineral-wool thermal insulation	50 mm
- reinforced bamboo-concrete	350 mm
- loam-render	20 mm
total	450 mm

#### outside wall system

- gravel	120 mm
- protection flies	180 mm
- wood-fibre board water-repellent bamboo	30 mm
- supporting structure, timber	50 mm
- triple glazing window, post-rail-facade	
- glued-laminated timber beam, 6-layers	250 mm
- wood-fibre boarding, untreated bamboo	30 mm
total	660 mm

#### ground system

- floating screed	50 mm
- pe interlayer	
- impact sound insulation	60 mm
- reinforced concrete ceiling	350 mm
- grounding concrete	30 mm
total	490 mm