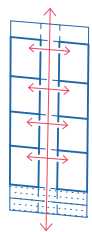


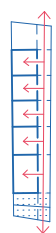
from own to common

With those floorplans there are flexible possibilities of use. The inhabitants can choose how big the flat should be and how many rooms they need. In front of the isolation part there is use of space which can be chosen individually. It can be used privately or opens up to share with the neighbours.



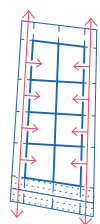
midtgang

the *midtgang* floorplan serves the rooms from a middle corridor.



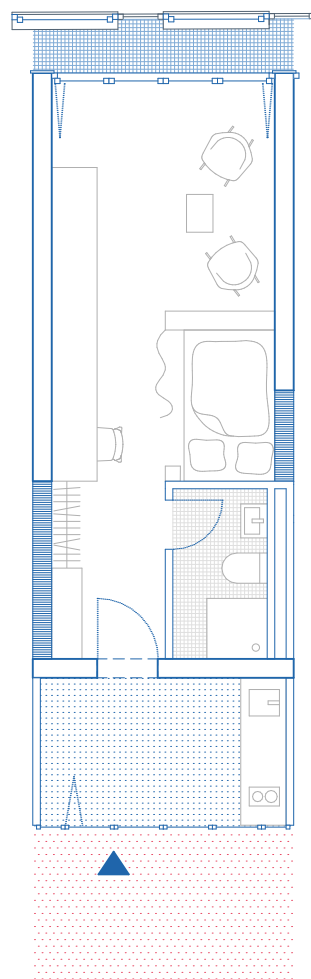
sidegang

the *sidegang* floorplan serves the rooms from a side corridor.



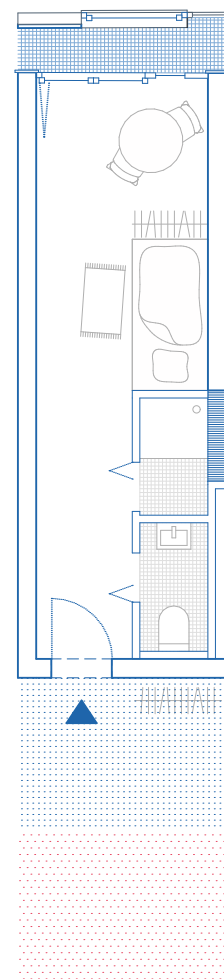
dobbelt

the *dobbelt* floorplan serves the rooms from the side corridor on both sides.



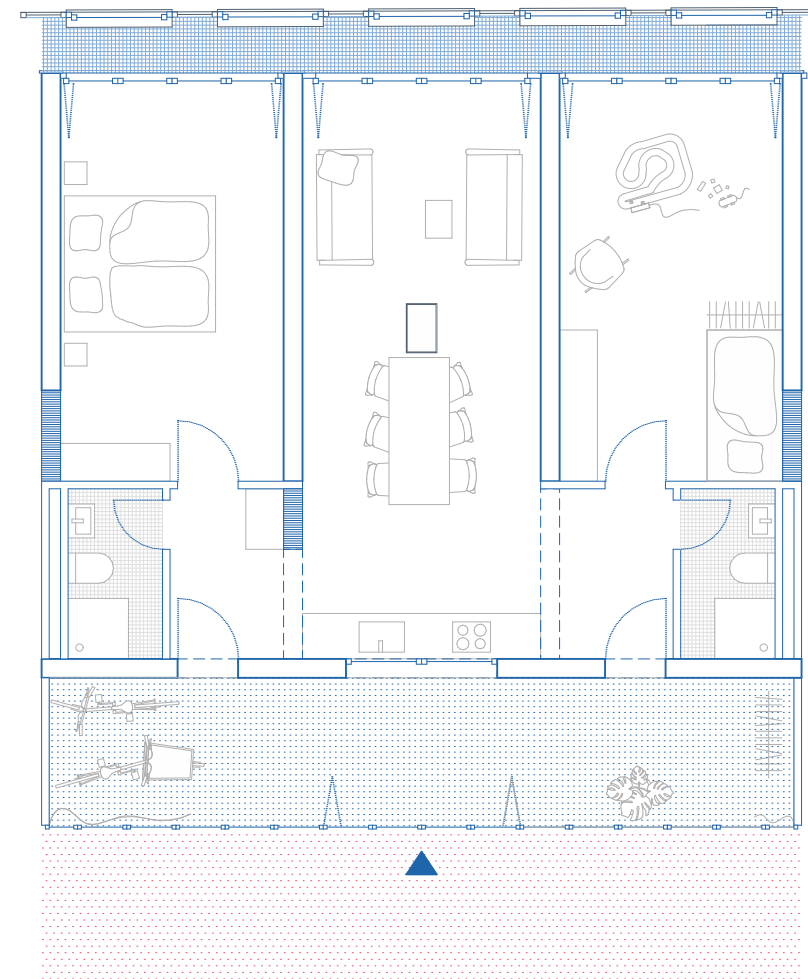
22 m² + 6 m²

Ida, an older woman, likes to live in her own small flat but she enjoys spending time in the shared area with all the other old and young neighbours.



17 m²

Henri, a student at NTNU, loves to spend a lot of time as possible with his friends. He doesn't need much space to live but he likes cooking and spending time with the neighbours. That's why he doesn't need the extra space.



70 m² + 20 m²

Ingeborg, Olaf and Mats, a young family just moved to Trondheim to work in the city. They like being so close to the centre so they can do everything by bike or by foot. They use the extra space to put their bikes and other outdoor stuff.