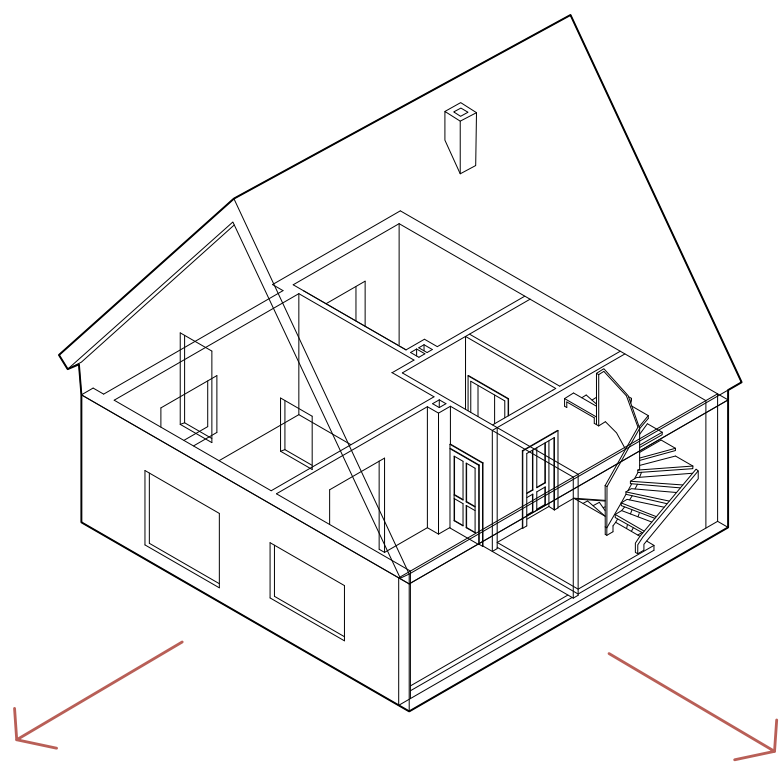
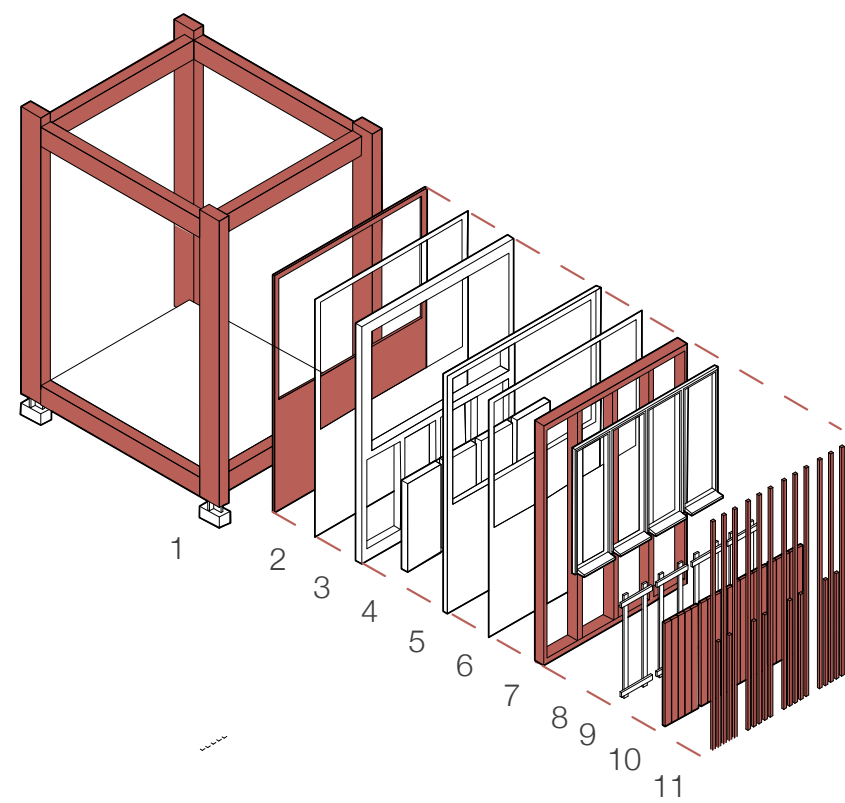


DESIGN - SECOND CORE DESIGN PRINCIPLES



Expanding living space with modular construction



Timber framework +
pre-manufactured wall elements

- 1. Timber frame trusses glulam
- 2. Plywood board interior finished
- 3. OSB shething and air/vapour control
- 4. Wall stud framing
- 5. Hemp insulation
- 6. Wood fibreboard
- 7. Larchs glulam as substructure
- 8. Timber frame triple-glazed window
- 9. Horizontal straping
- 10. Reclamed larch cladding
- 11. Larch slats to form timber screen