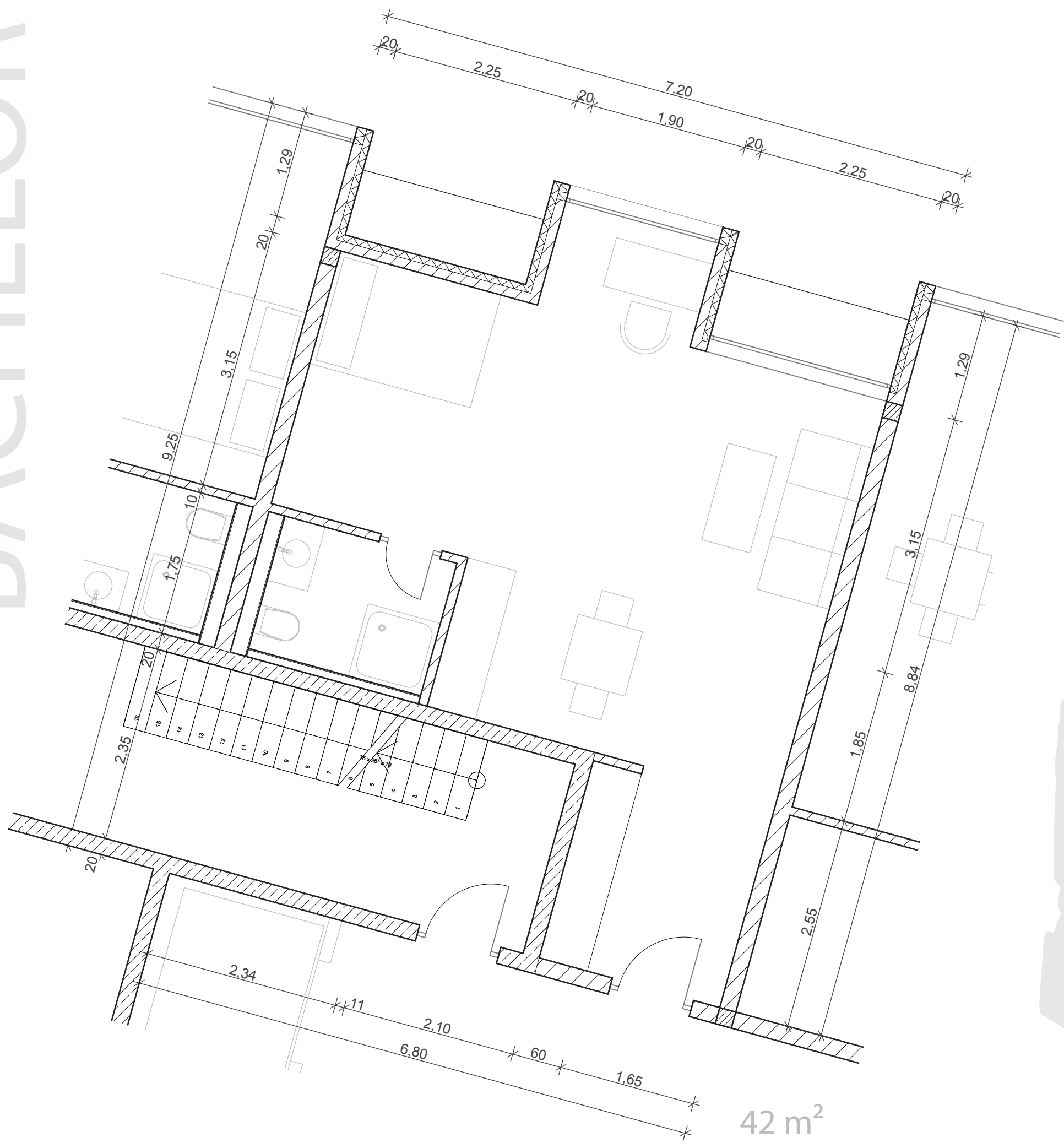
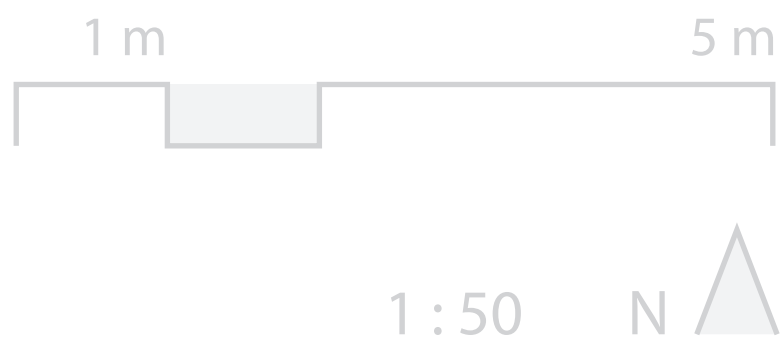
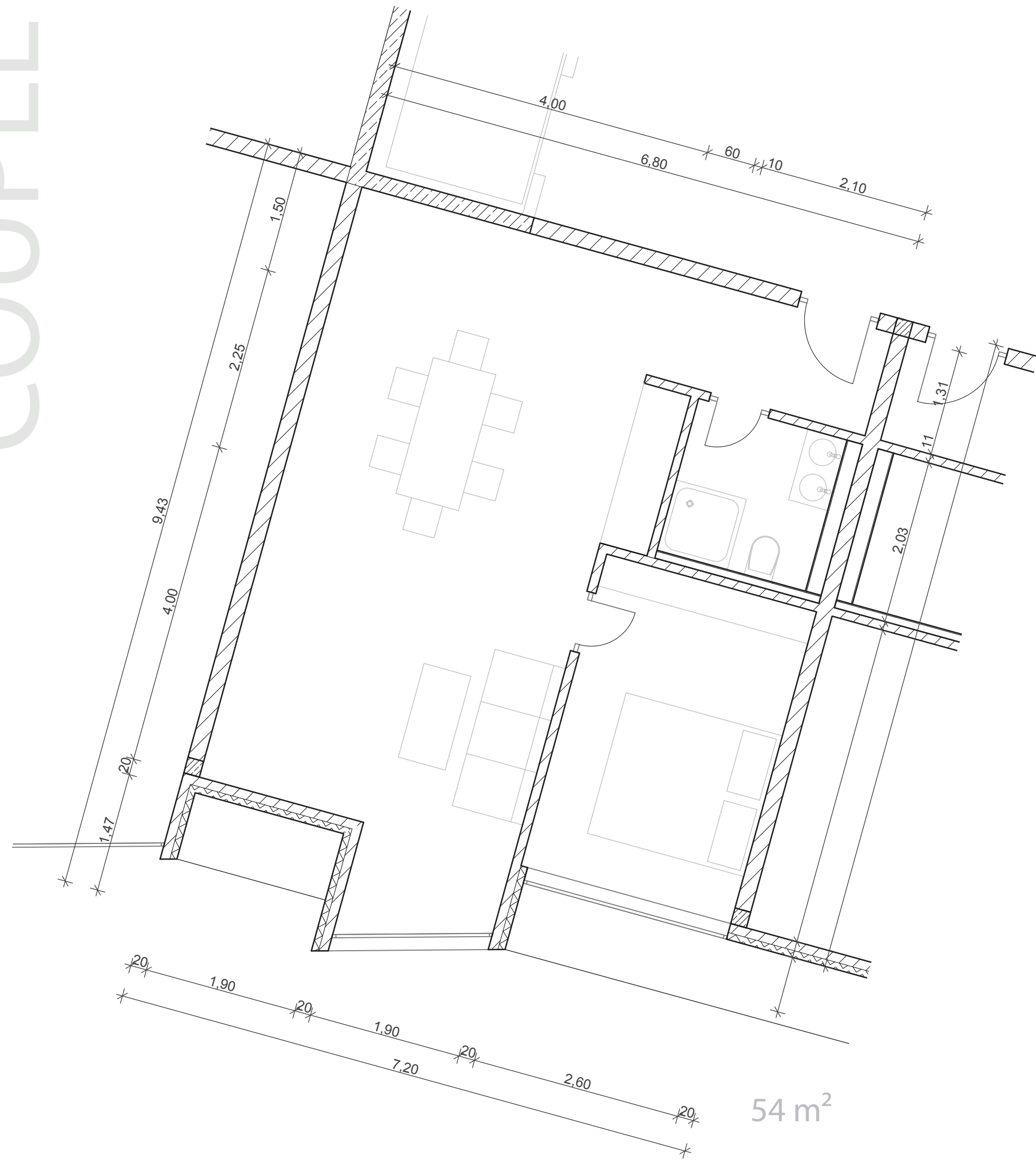


different types of apartments

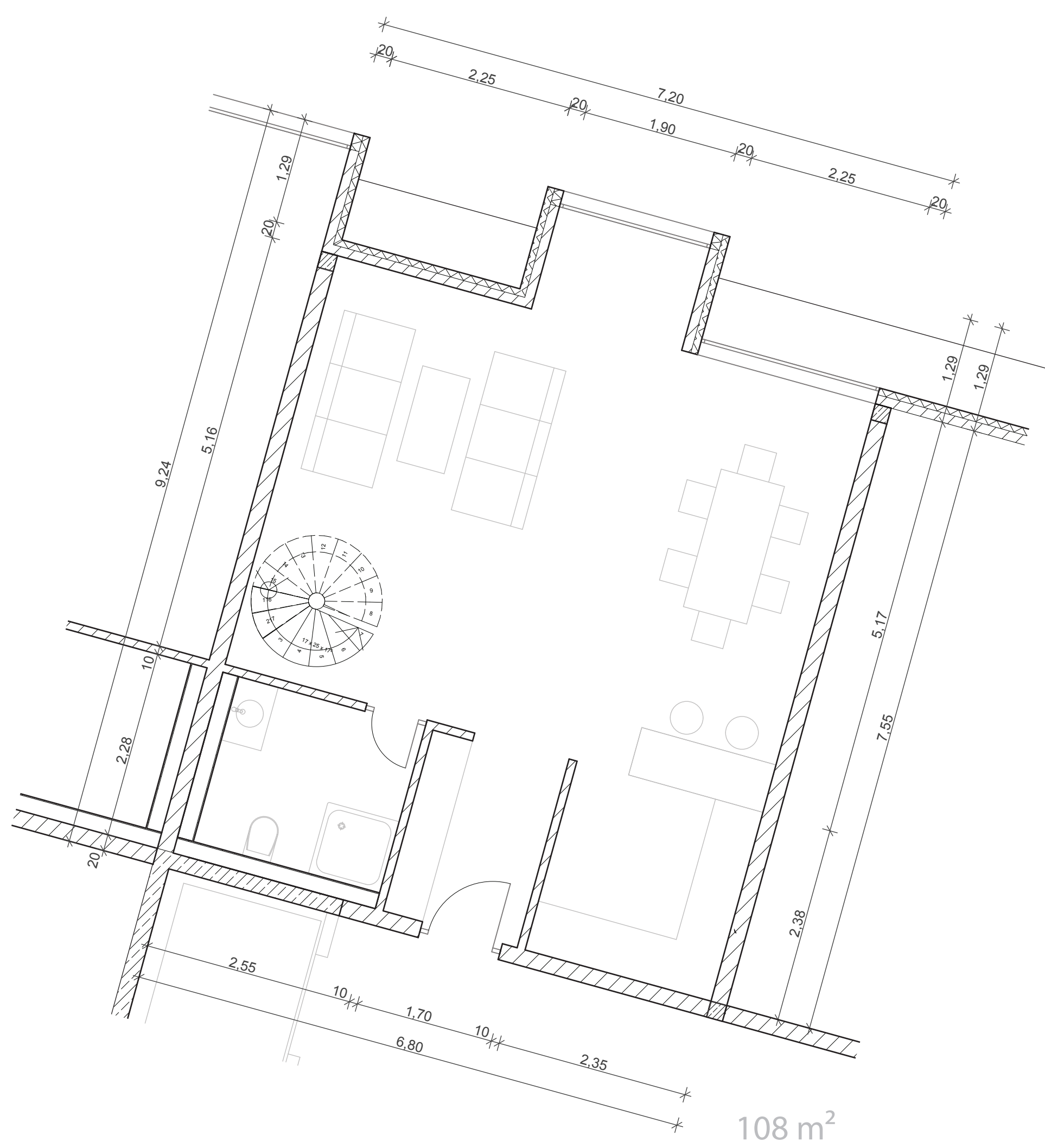
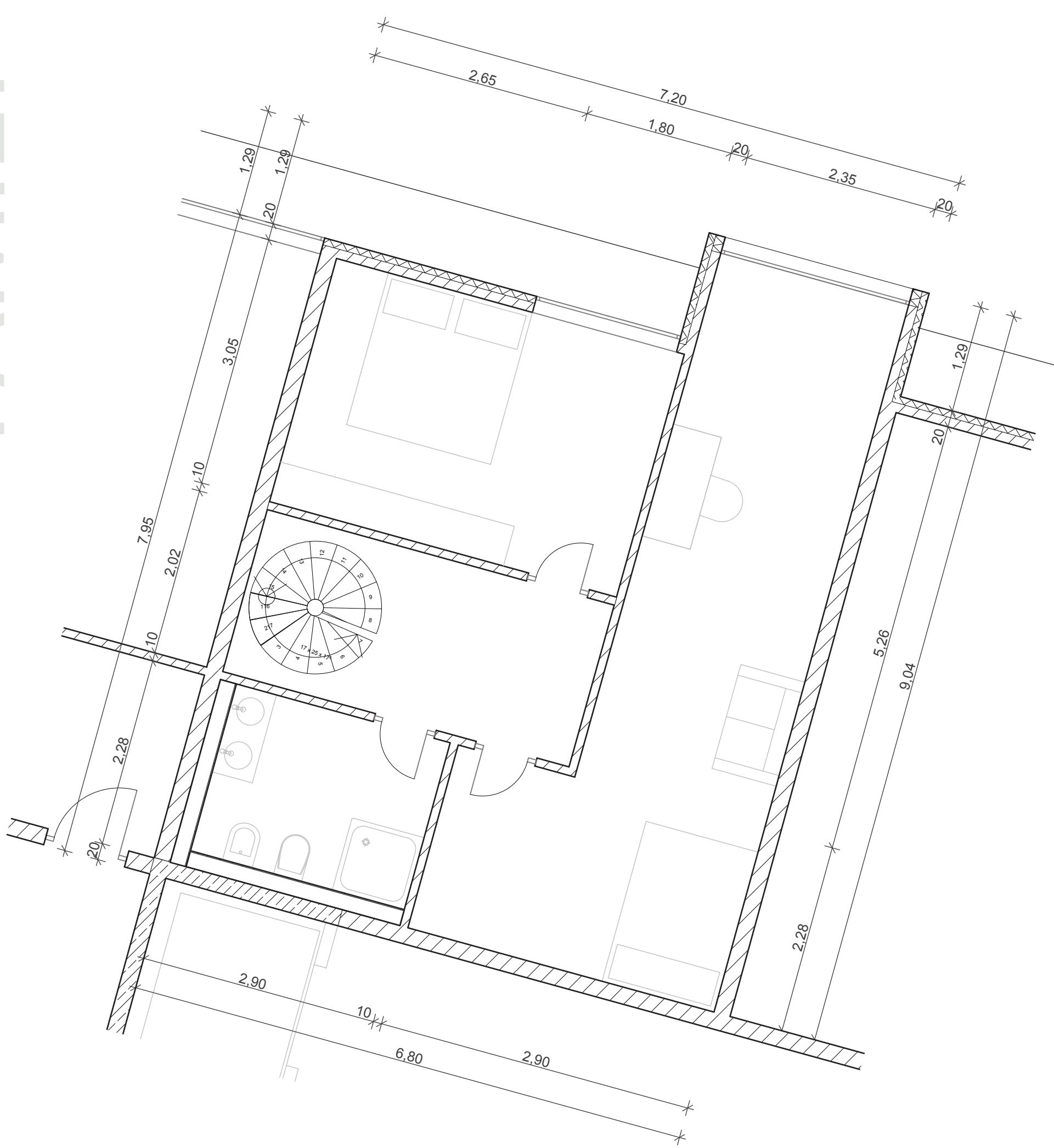
BACHELOR



COUPLE



FAMILY



explanation

development

the grid of pillars that has been chosen as a static system allows for the dividing walls to be completely flexible, as it carries the entire load of the building

the measurements of the grid have been chosen with regard to sensible apartment sizes from the very beginning of the design process, which enables the floor plans of the flats to be unobtrusive and without impeding columns in the middle of the room

diversity

the moduls that are generated by the pillar-grid have been used to create apartments of different sizes. for example two modules that are next to each other can be made into a very spacious one-bedroom apartment. and the modules that are intersected by the main staircases offer a compact and affordable bachelor apartment. two modules that are directly above each other can be combined by a small spiral staircase so that they provide enough space for a family. also in this way, rooms of the buiding, which cannot be reached by the main staircase, can be made usable. by offering apartments of varying sizes, the building can at tract people of different classes and thereby encourages social diversity and interaction.

AFFLUENT

